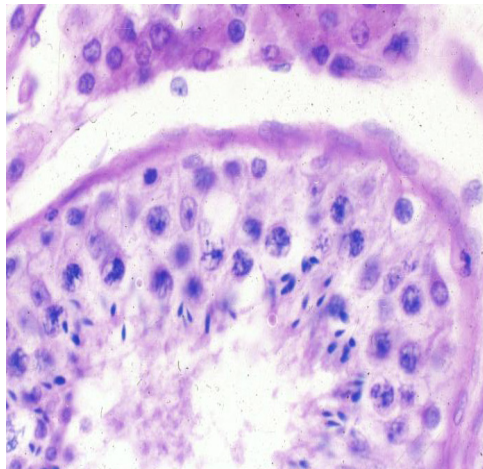
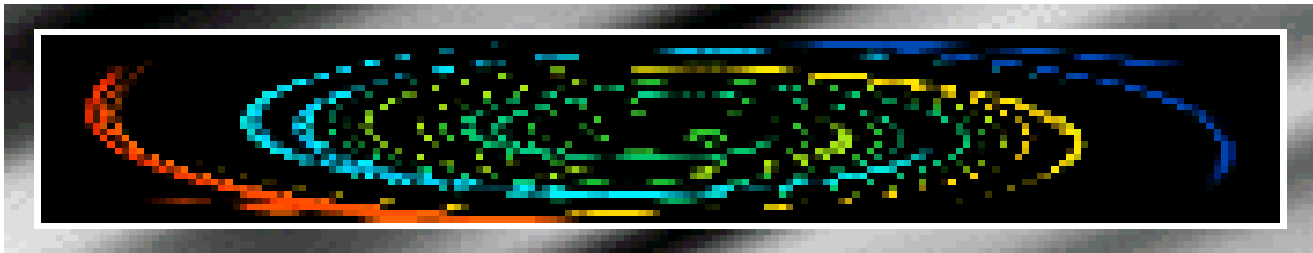


Histology and Embryology



Chapter 1 Introduction and Cell	Chapter 11 Digestive Tract
Chapter 2 Epithelial tissue	Chapter 12 Digestive Gland
Chapter 3 Connective Tissue	Chapter 13 Respiratory System
Chapter 4 Blood	Chapter 14 Urinary System
Chapter 5 Cartilage and Bone	Chapter 15 Endocrine System
Chapter 6 Muscle Tissue	Chapter 16 Sense Organ
Chapter 7 Nerve Tissue	Chapter 17 Male Reproduction
Chapter 8 Circulatory System	<u>Chapter 18 Female Reproduction</u>
Chapter 9 Immune System	Chapter 19 Embryology 1
Chapter 10 Skin	Chapter 20 Embryology 2

Chapter 18 female reproductive system

I slides

II specimens

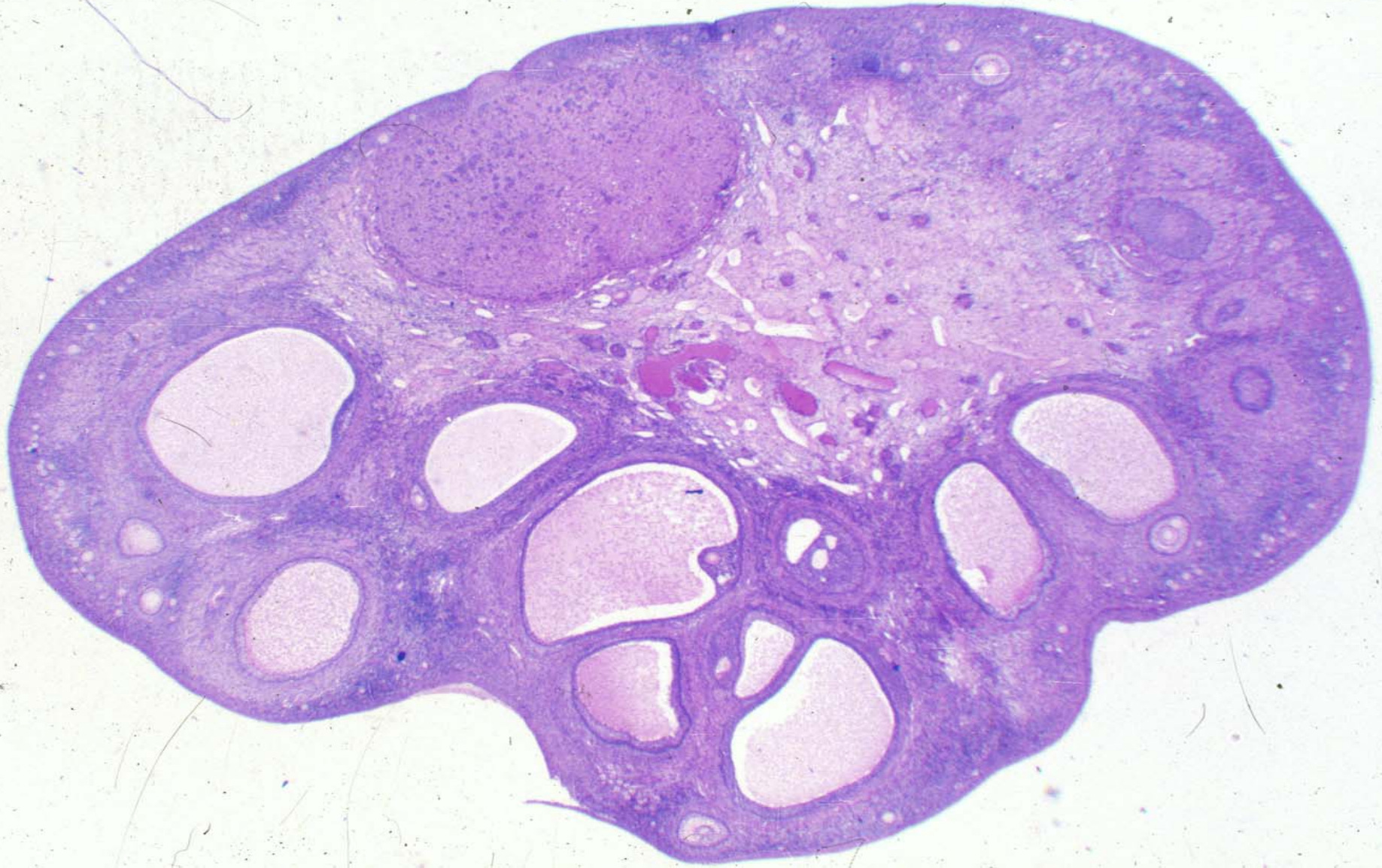
NO.92 ovary

NO.94 uterus

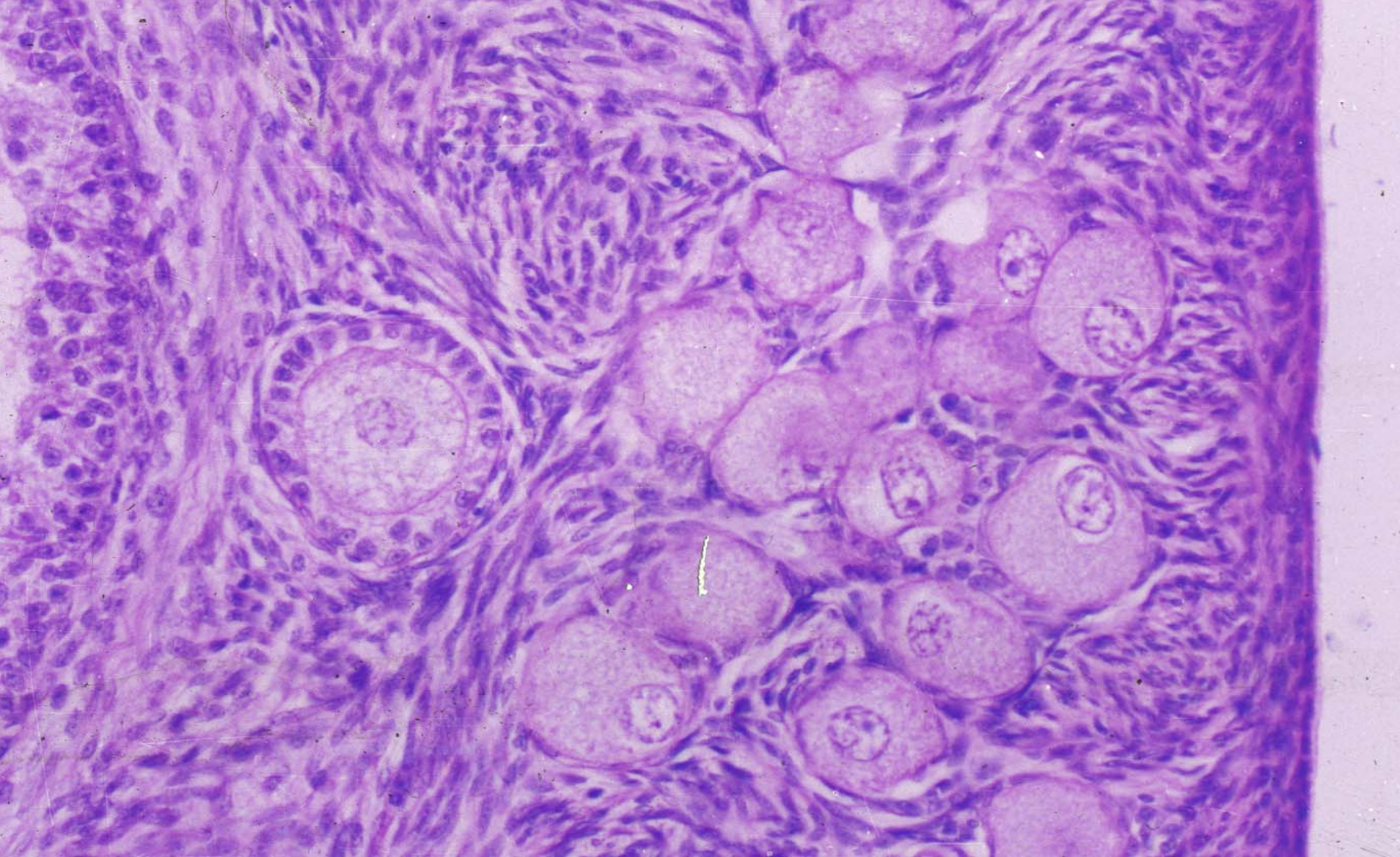
III EM photograph69---72

IV summary

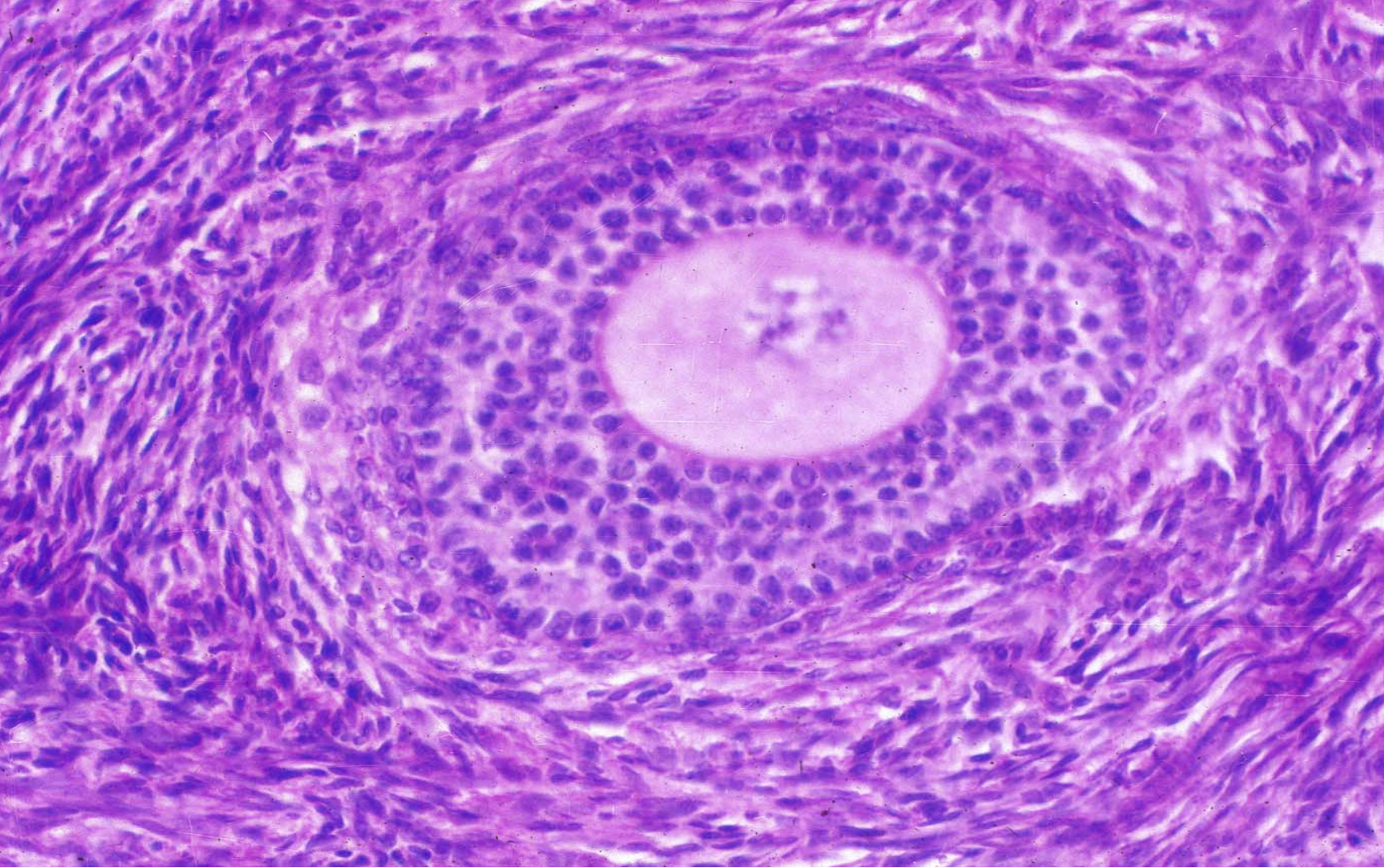




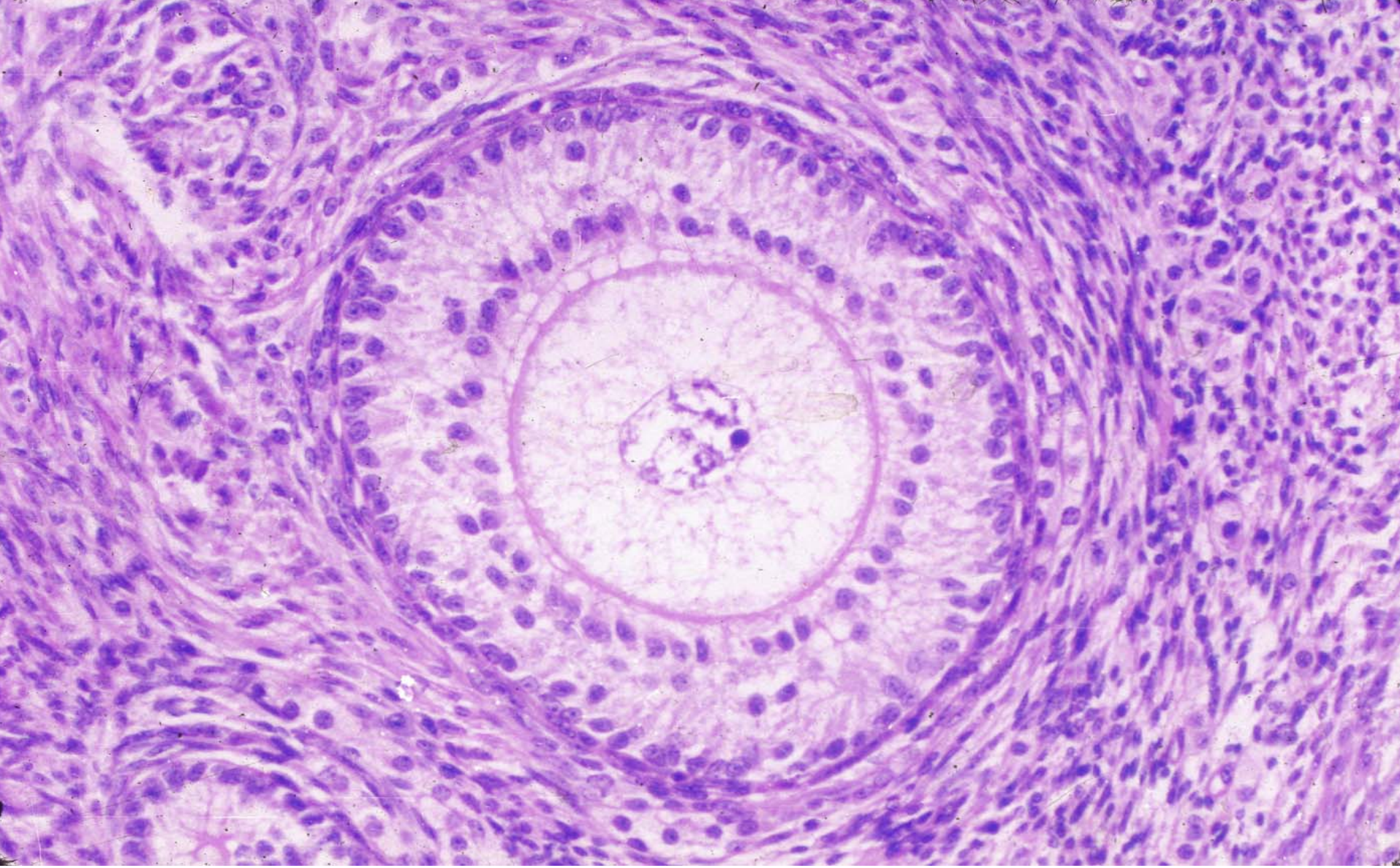
ovary



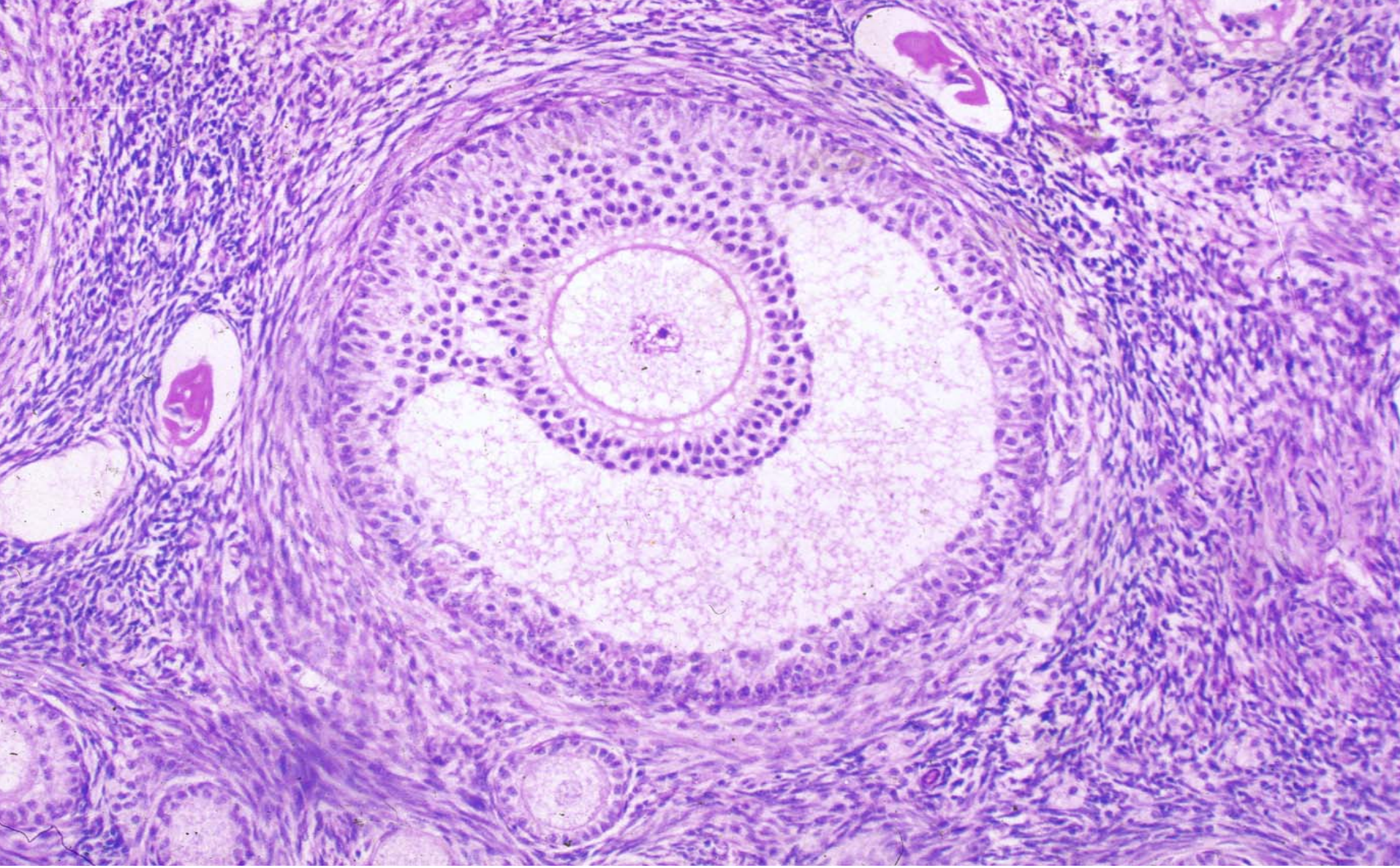
primordial follicle and primary follicle



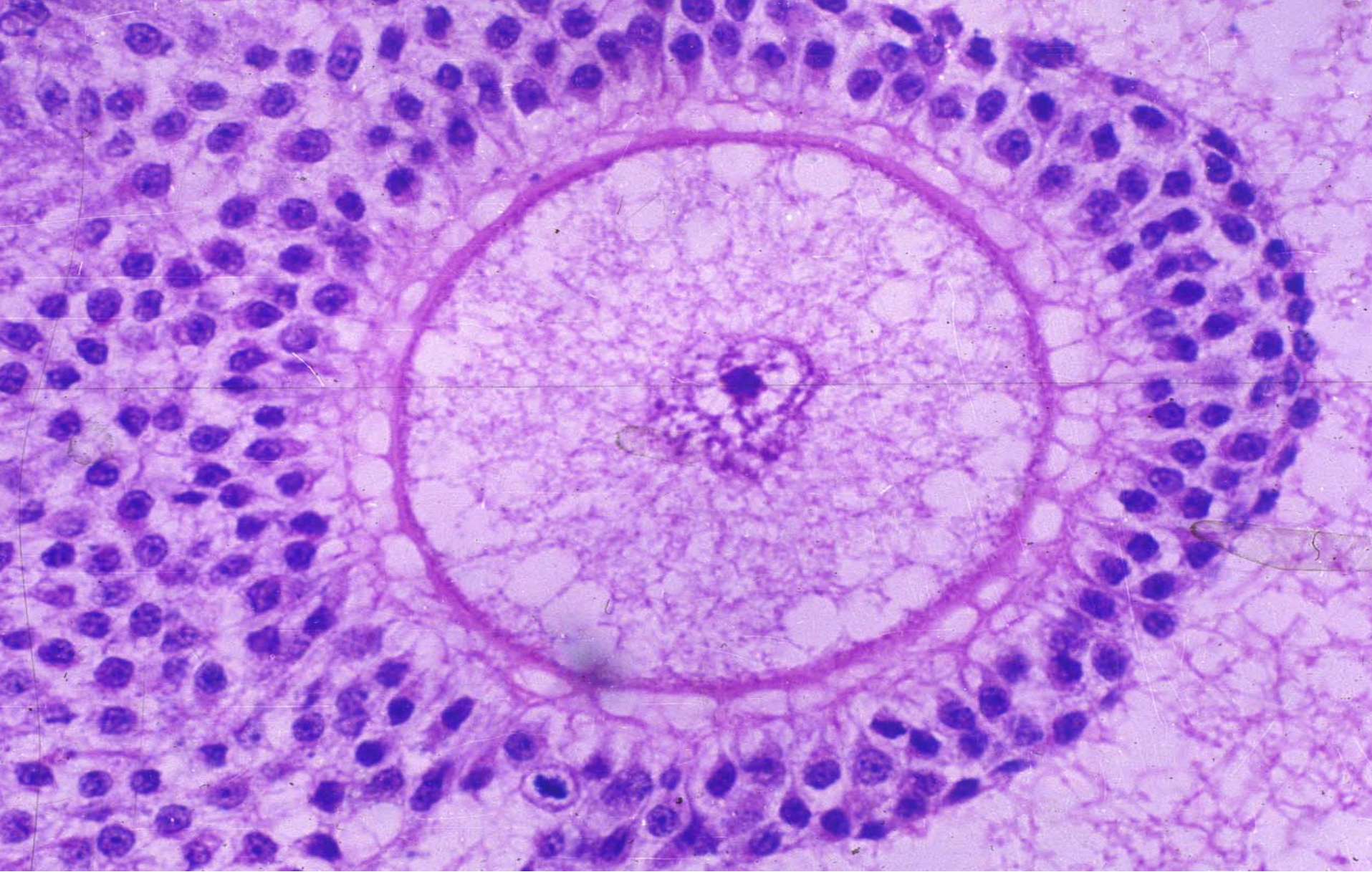
primary follicle



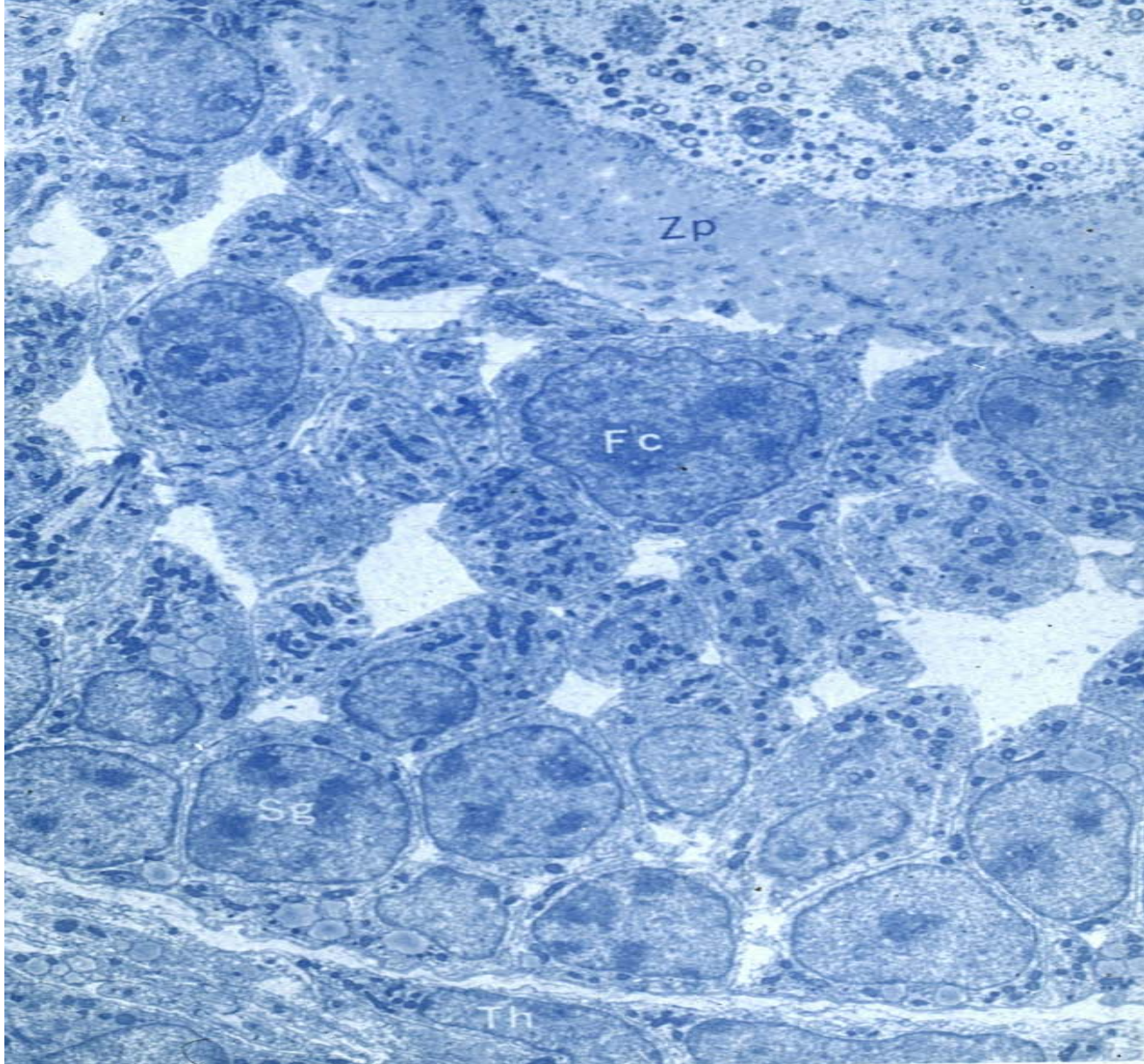
secondary follicle



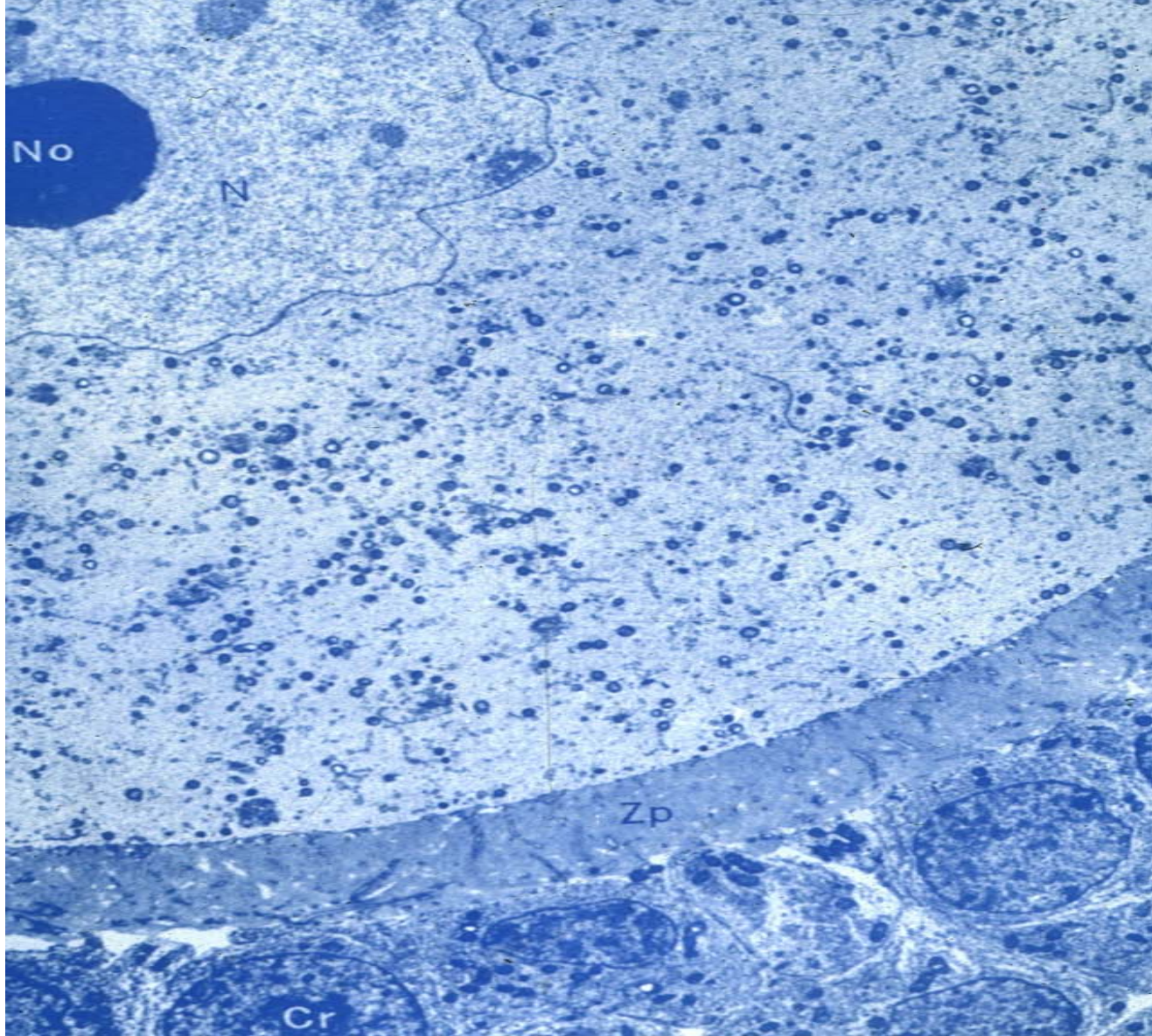
secondary follicle



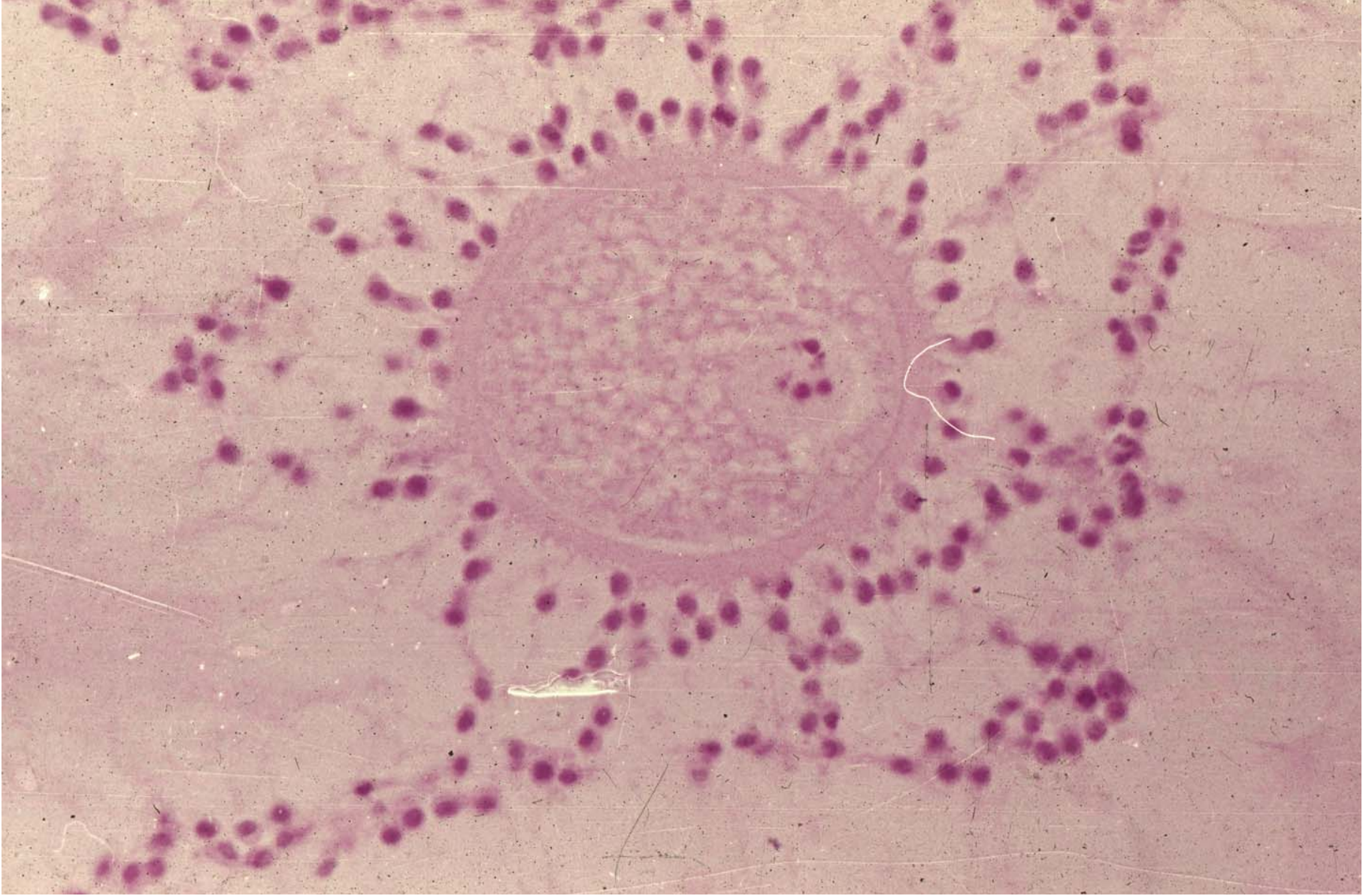
cumulus oophorus



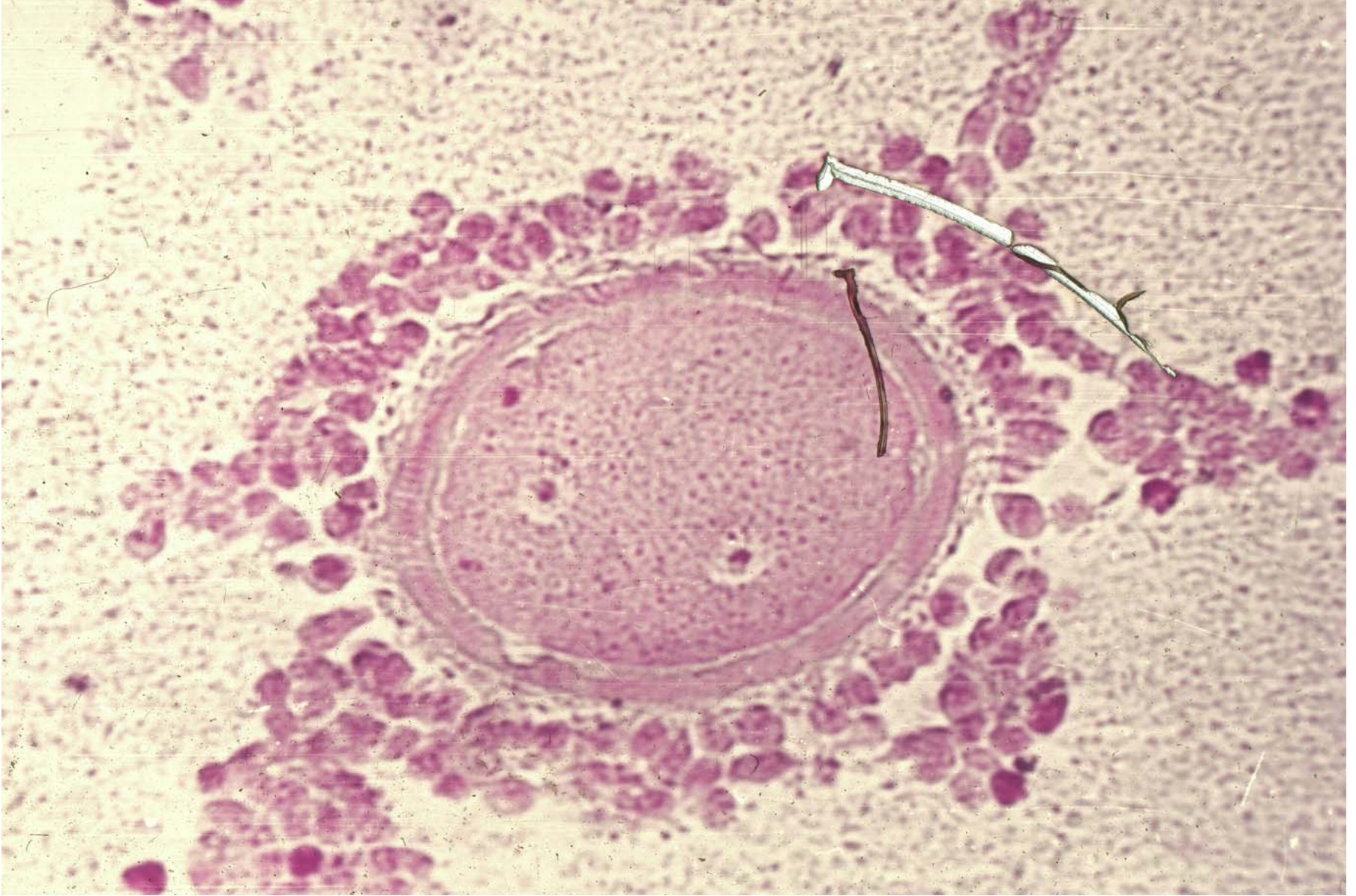
cumulus oophorus



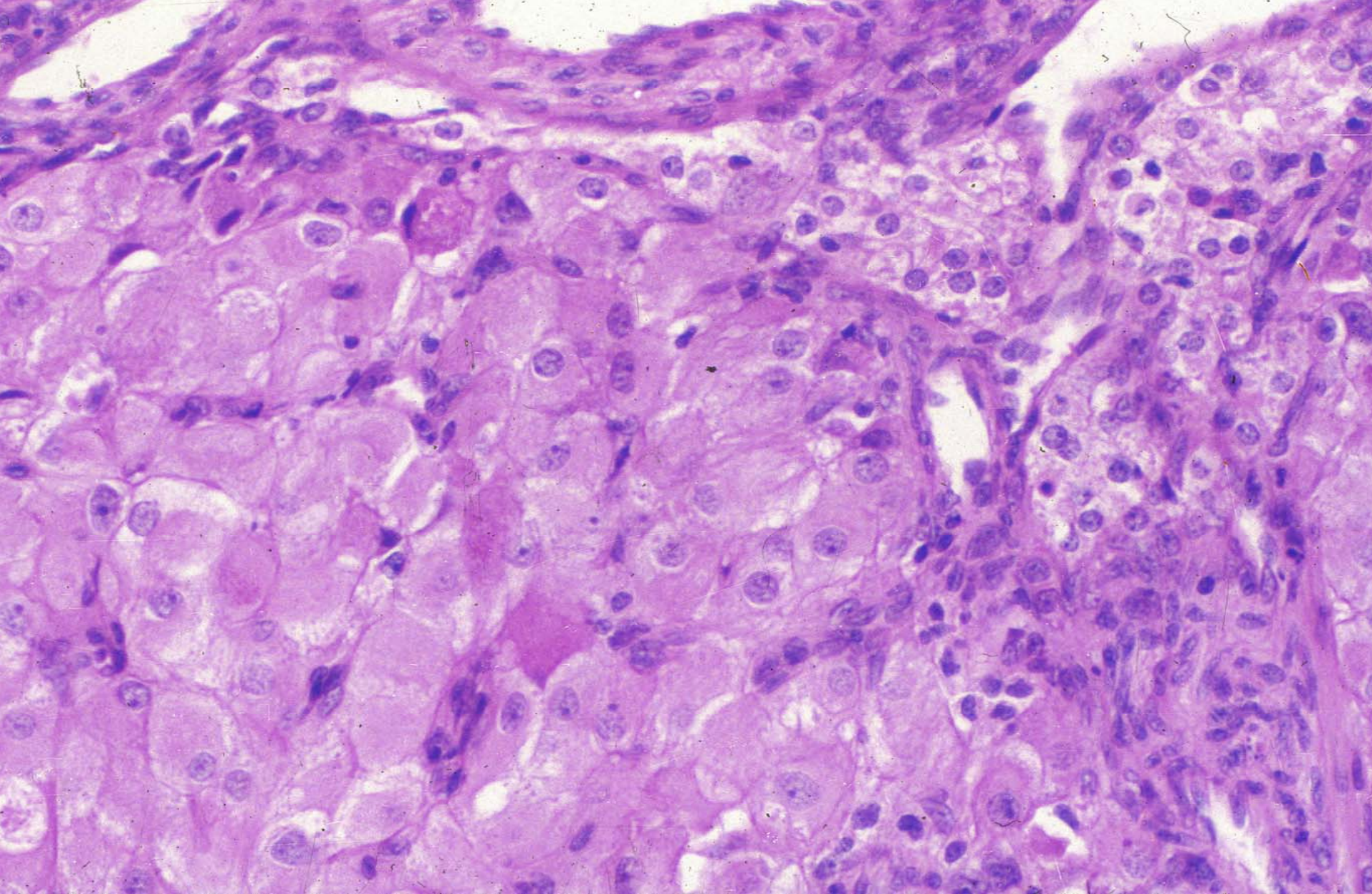
cumulus oophorus



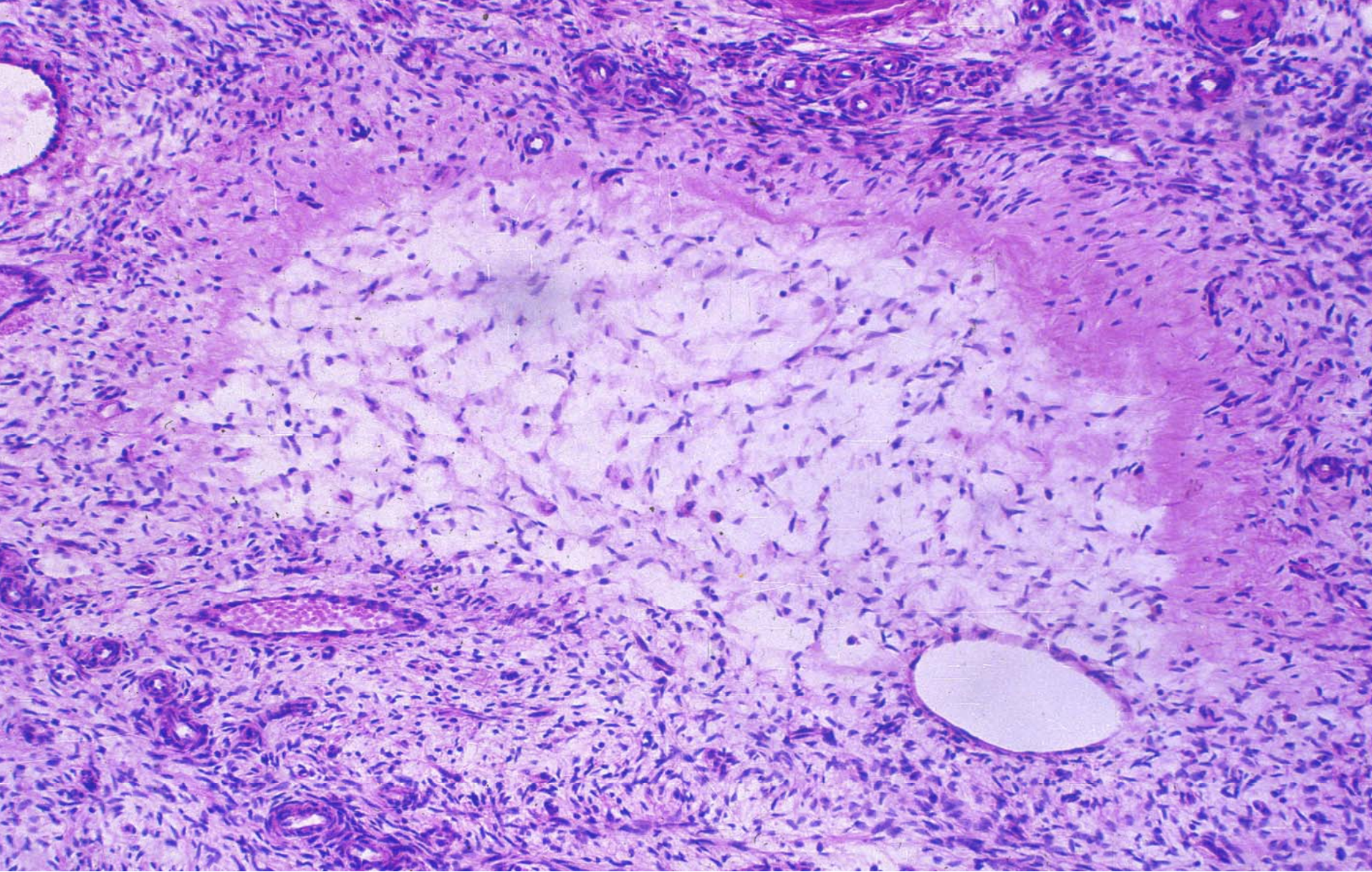
ovum



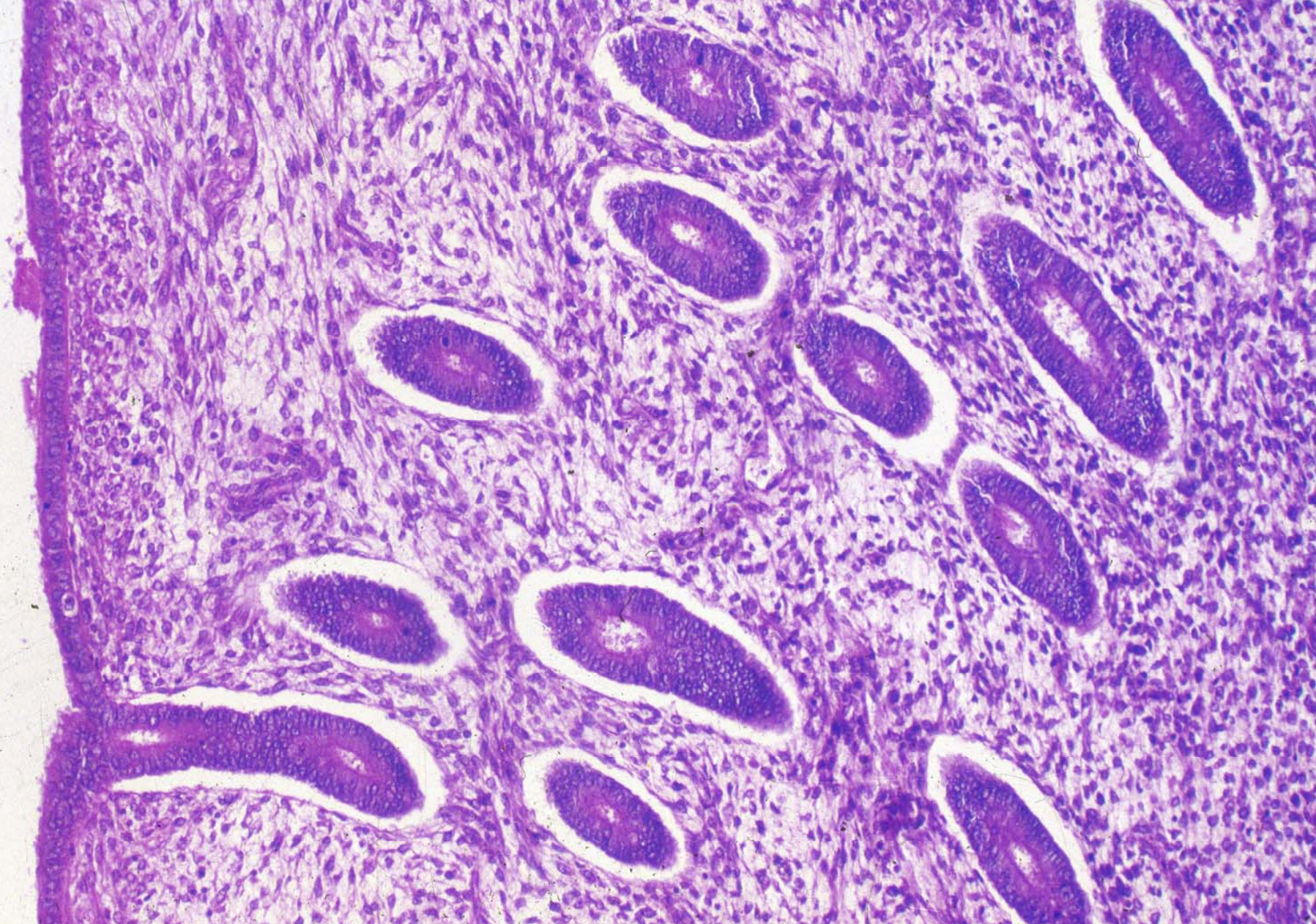
oosperm



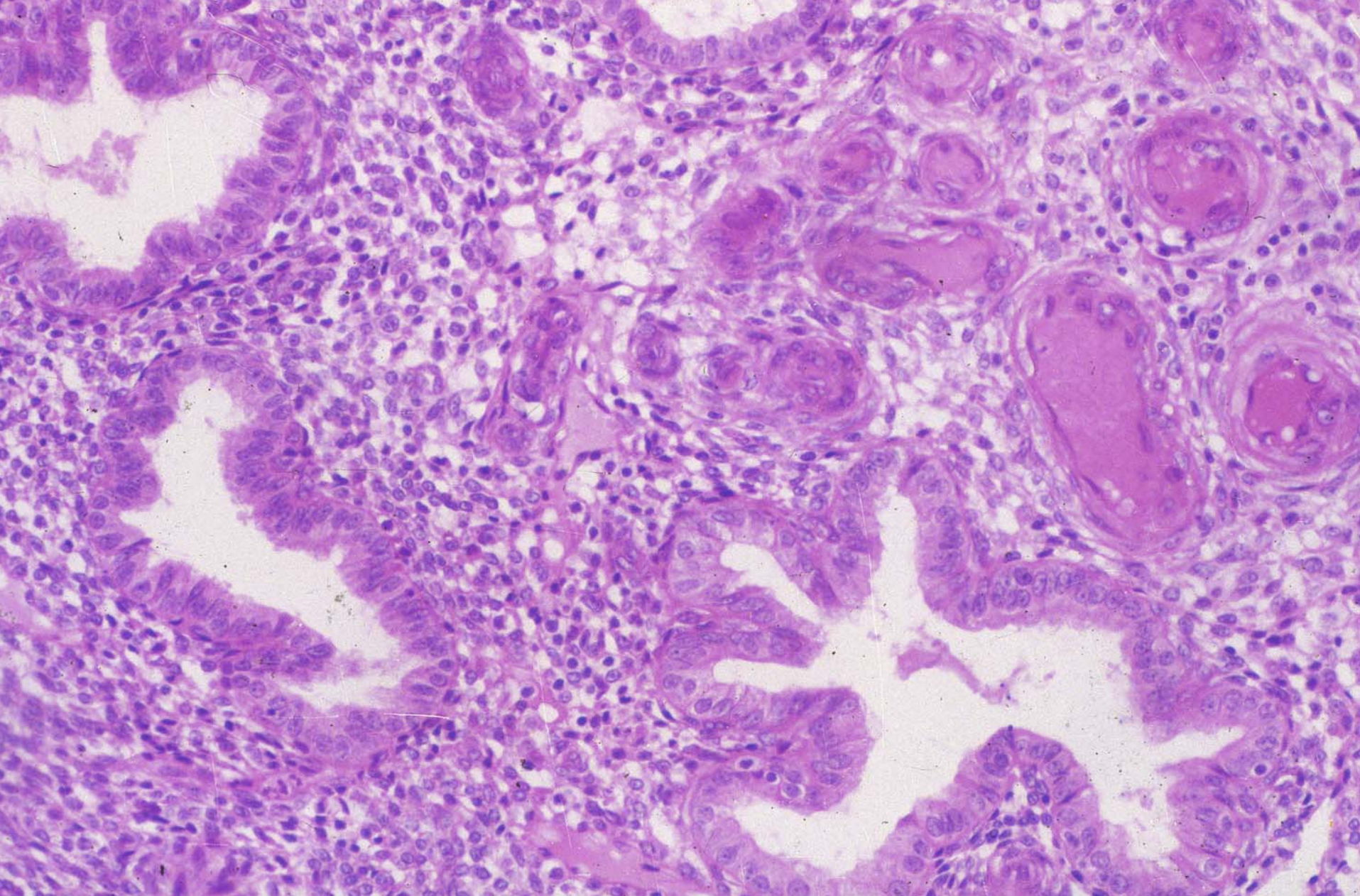
corpus luteum



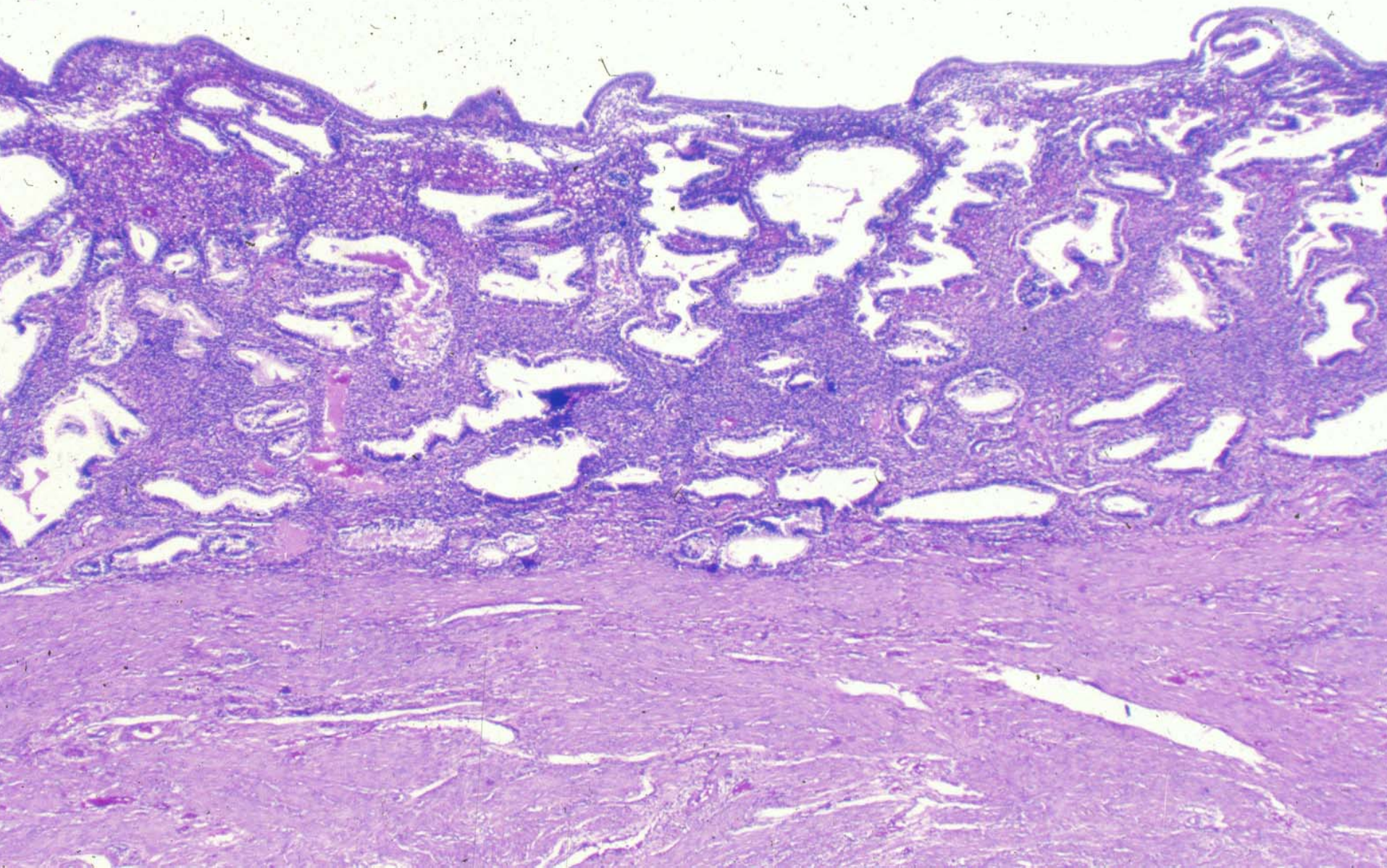
corpus albicans



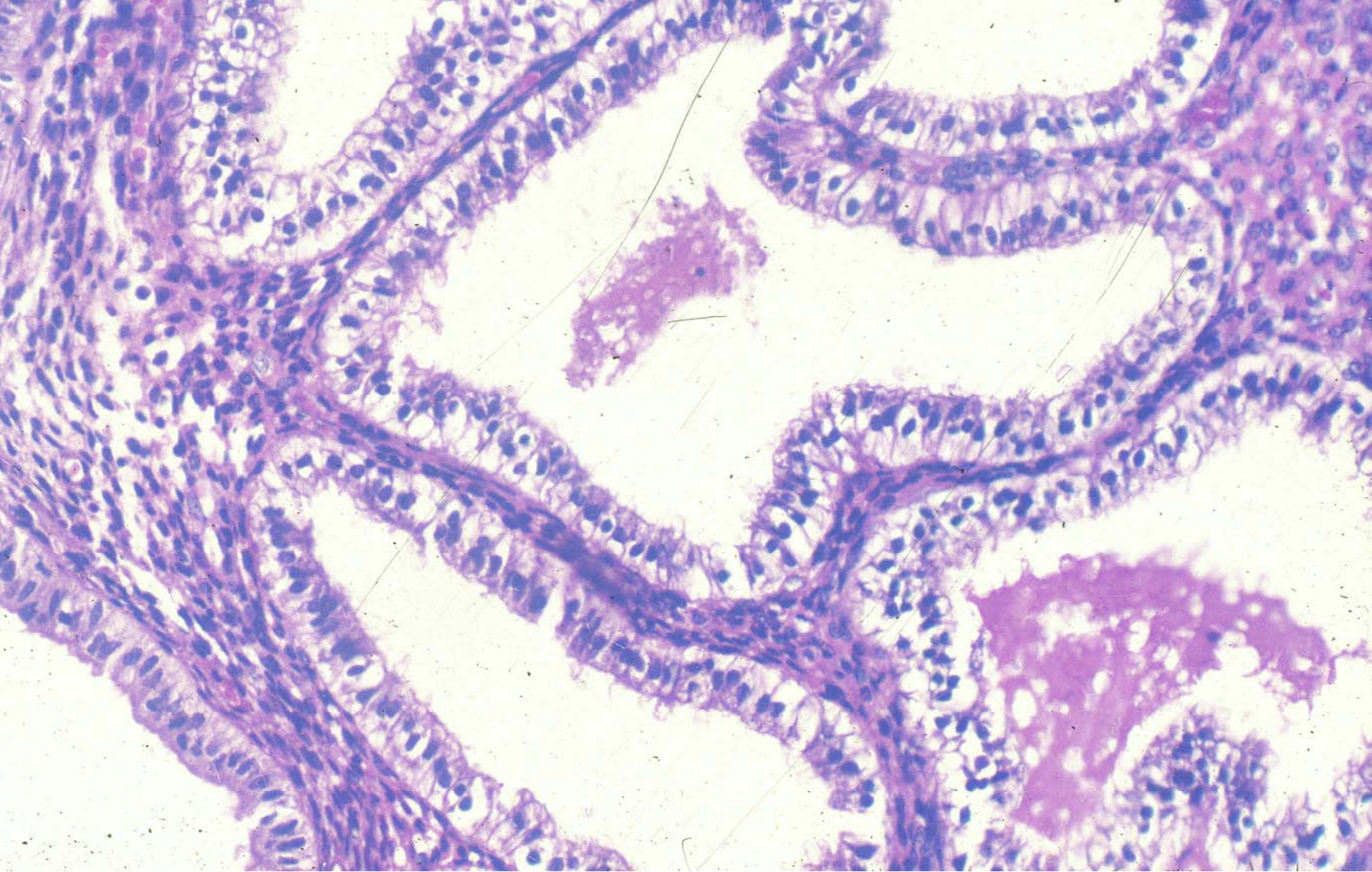
uterus in proliferative phase



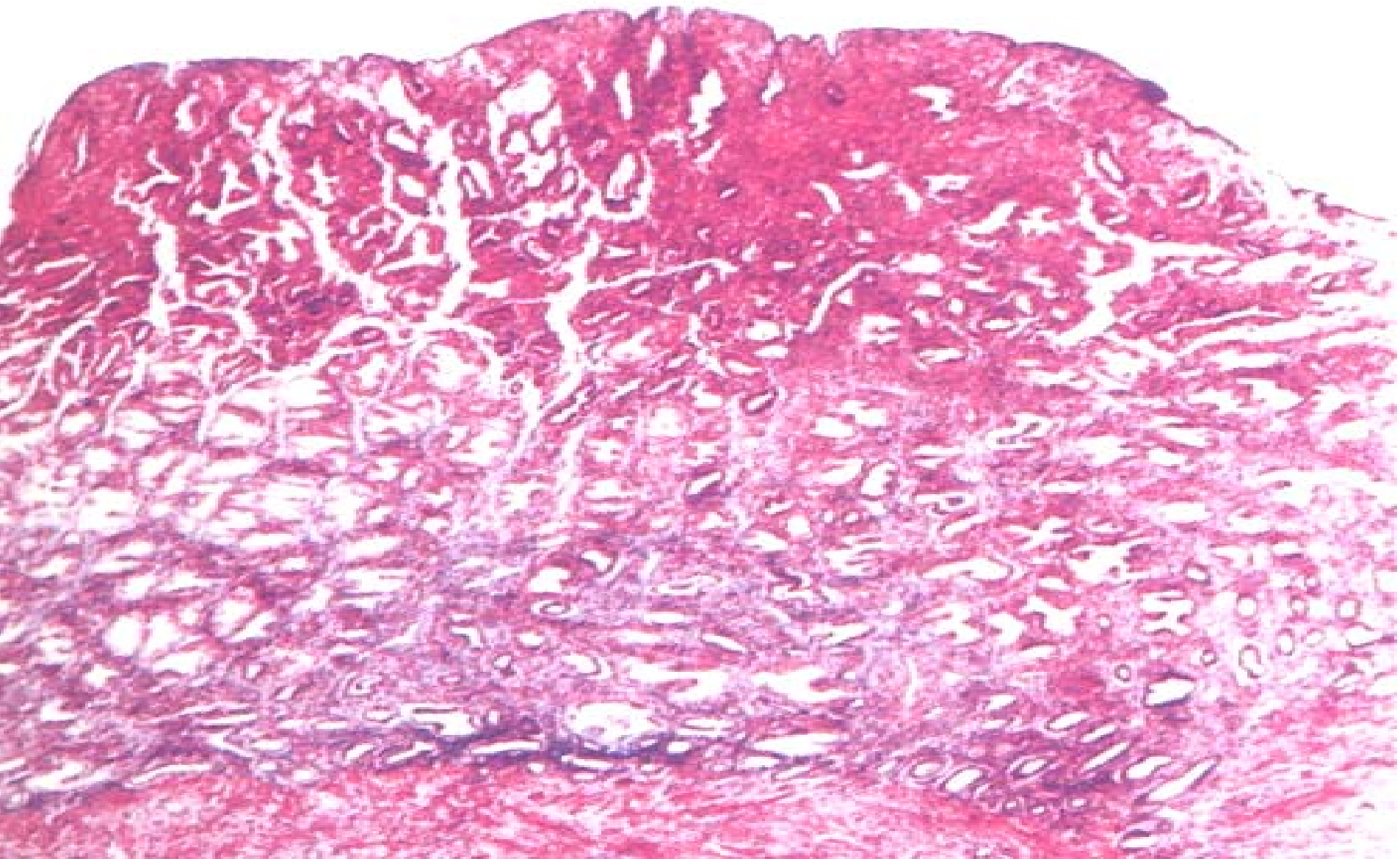
uterus in proliferative state



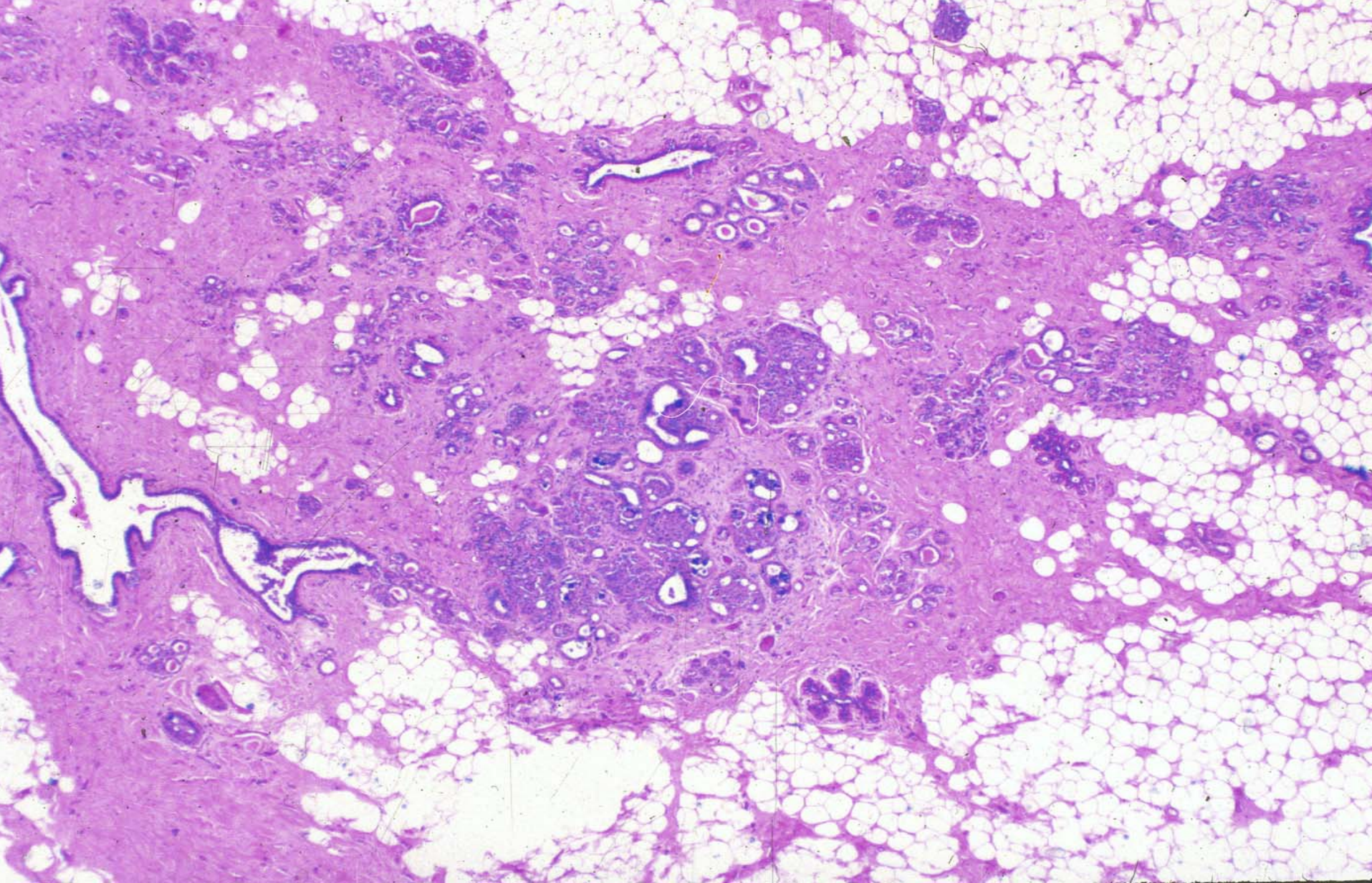
uterus in secretory state



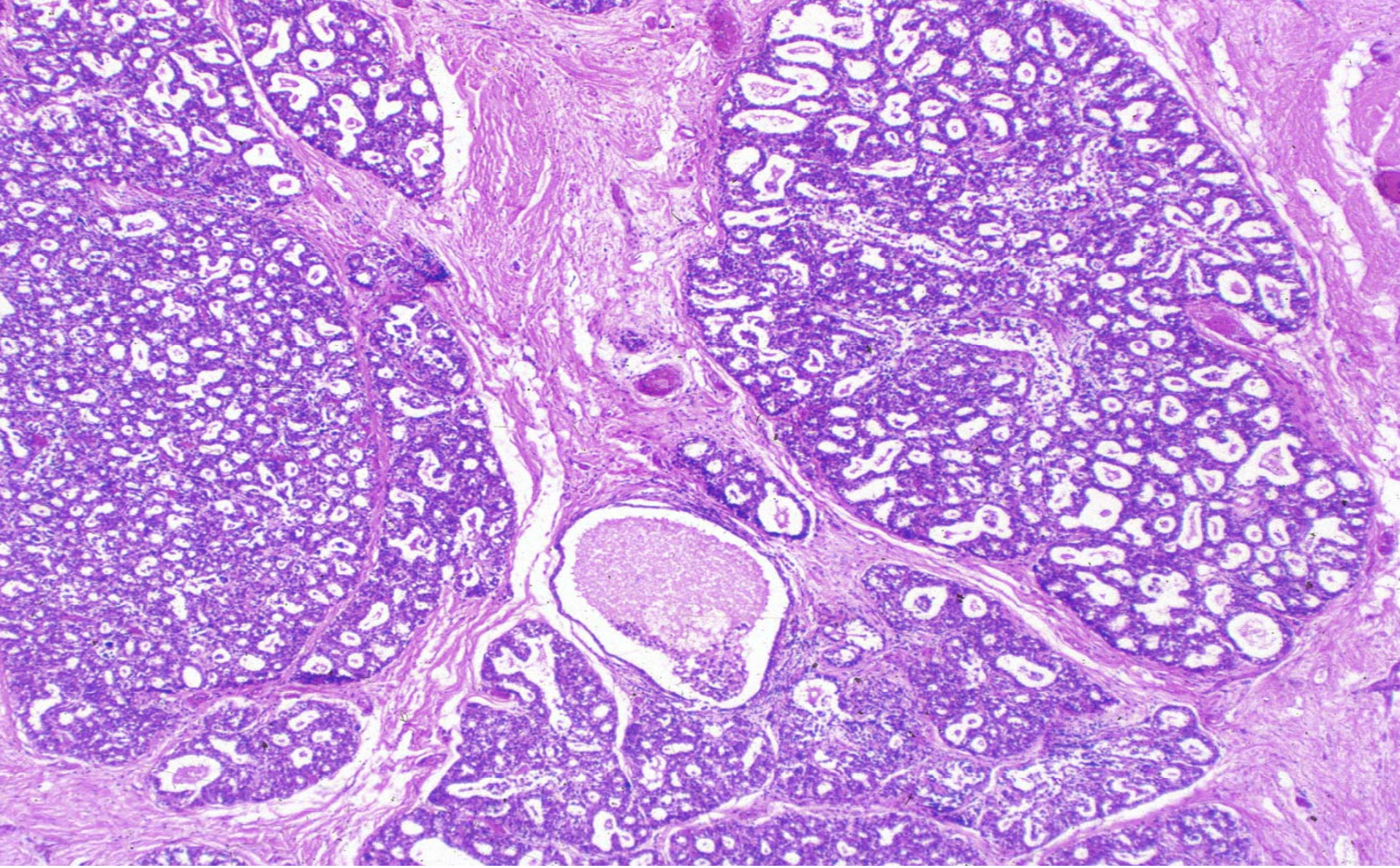
uterus in secretory state



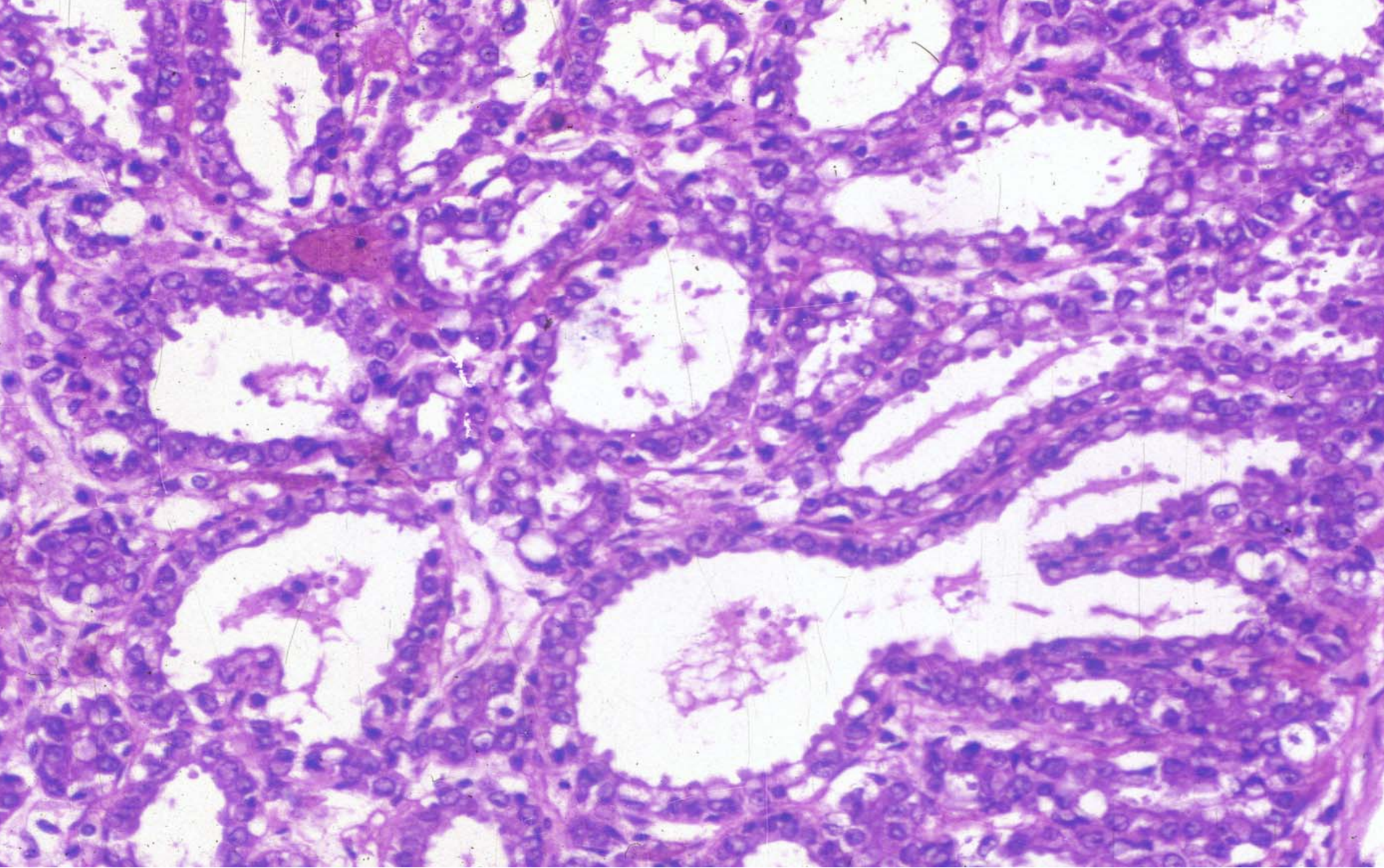
uterus in menstrual phase



mammary glands in resting state



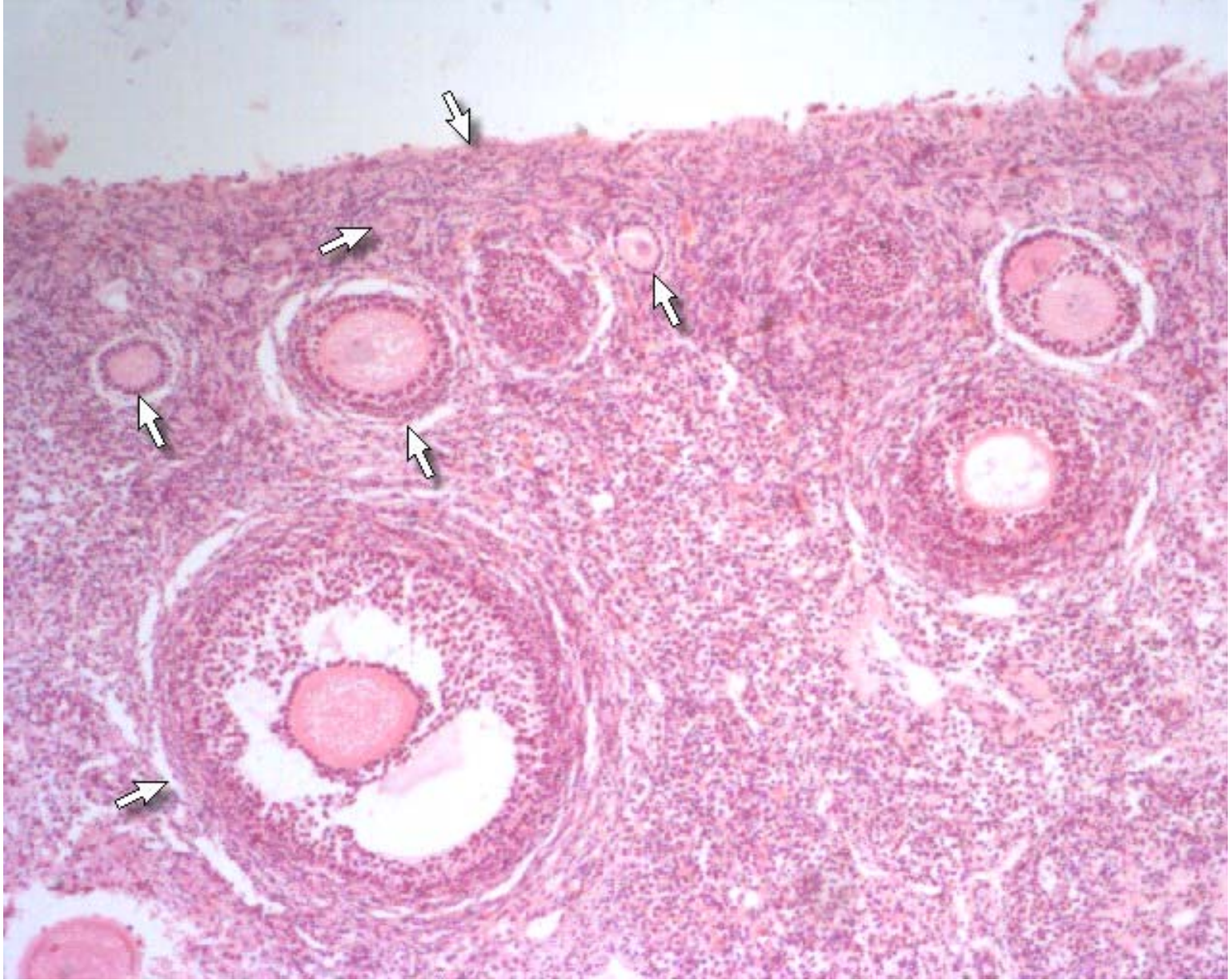
mammary glands in pregnant states



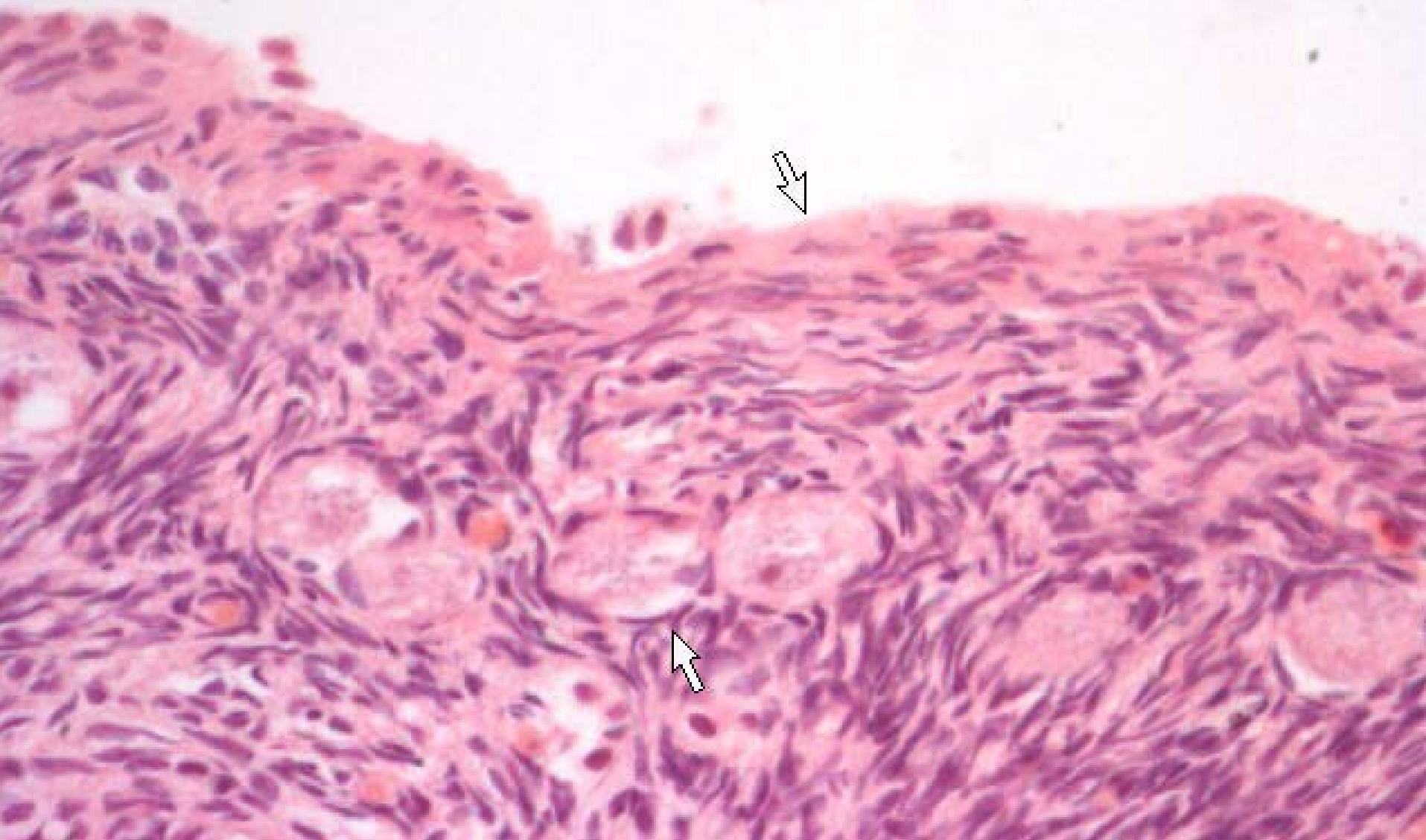
mammary glands in pregnant state

summary

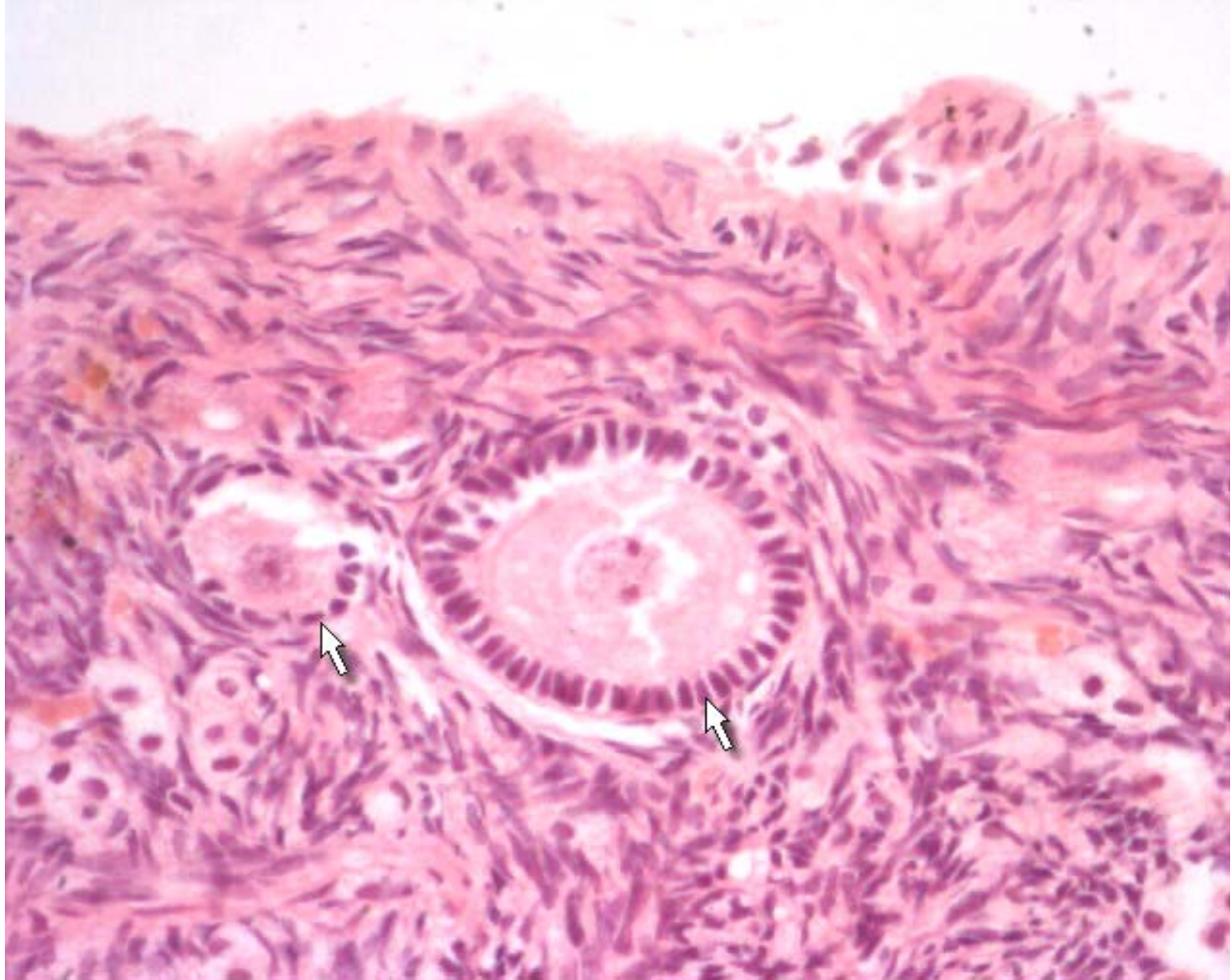
- the structure of ovary
- the structure of uterus



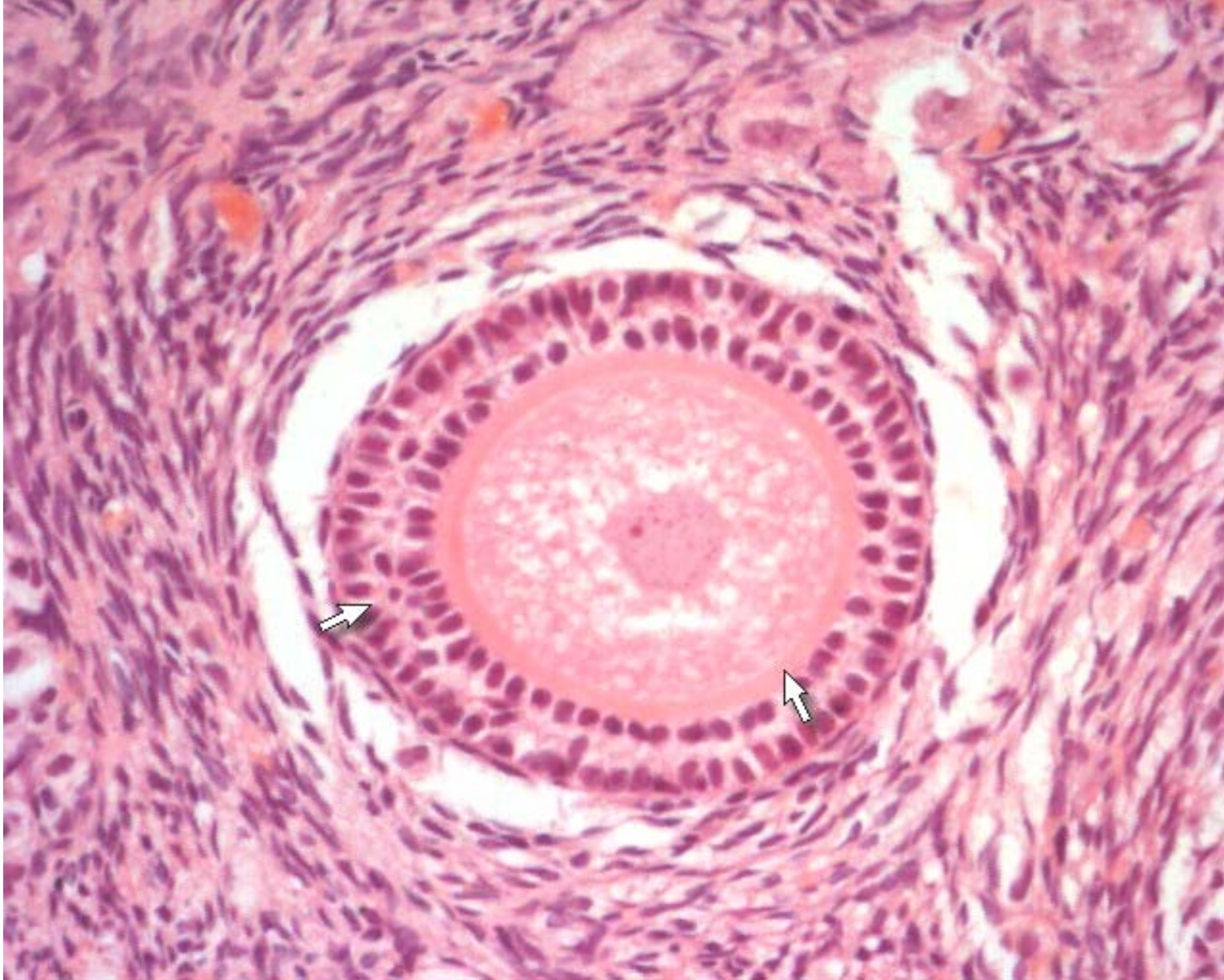
ovary



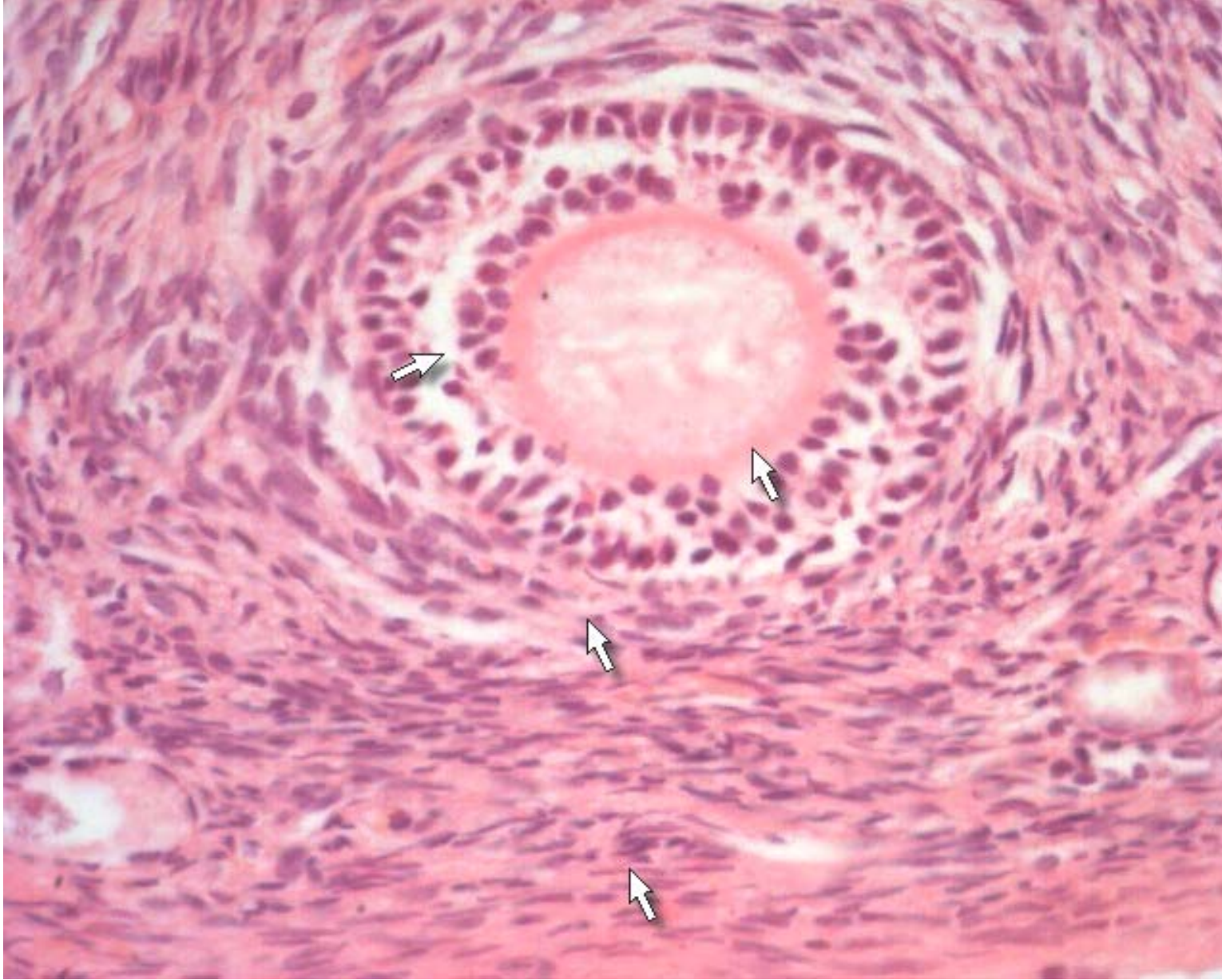
primordial follicle



primary follicle



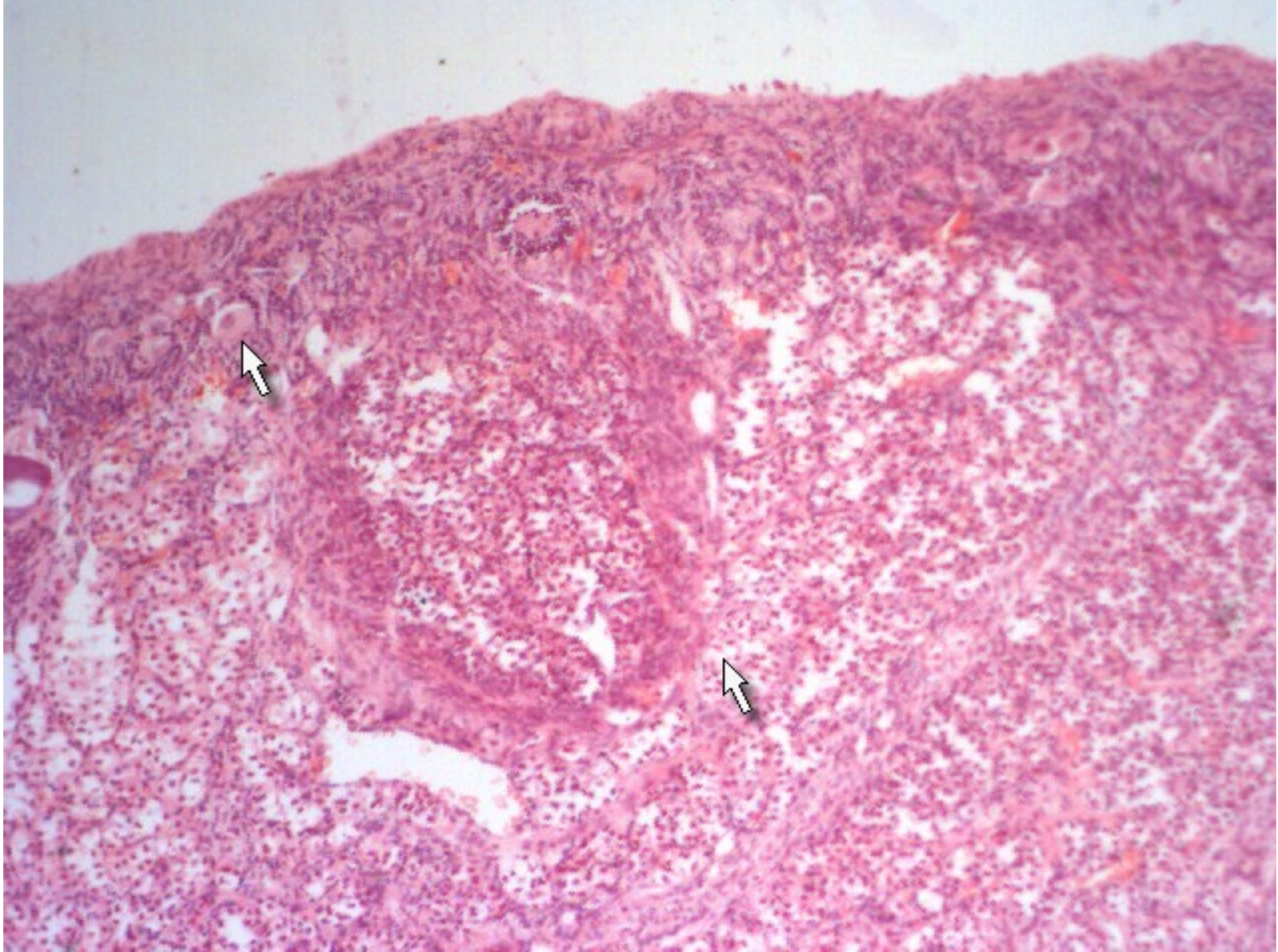
primary follicle



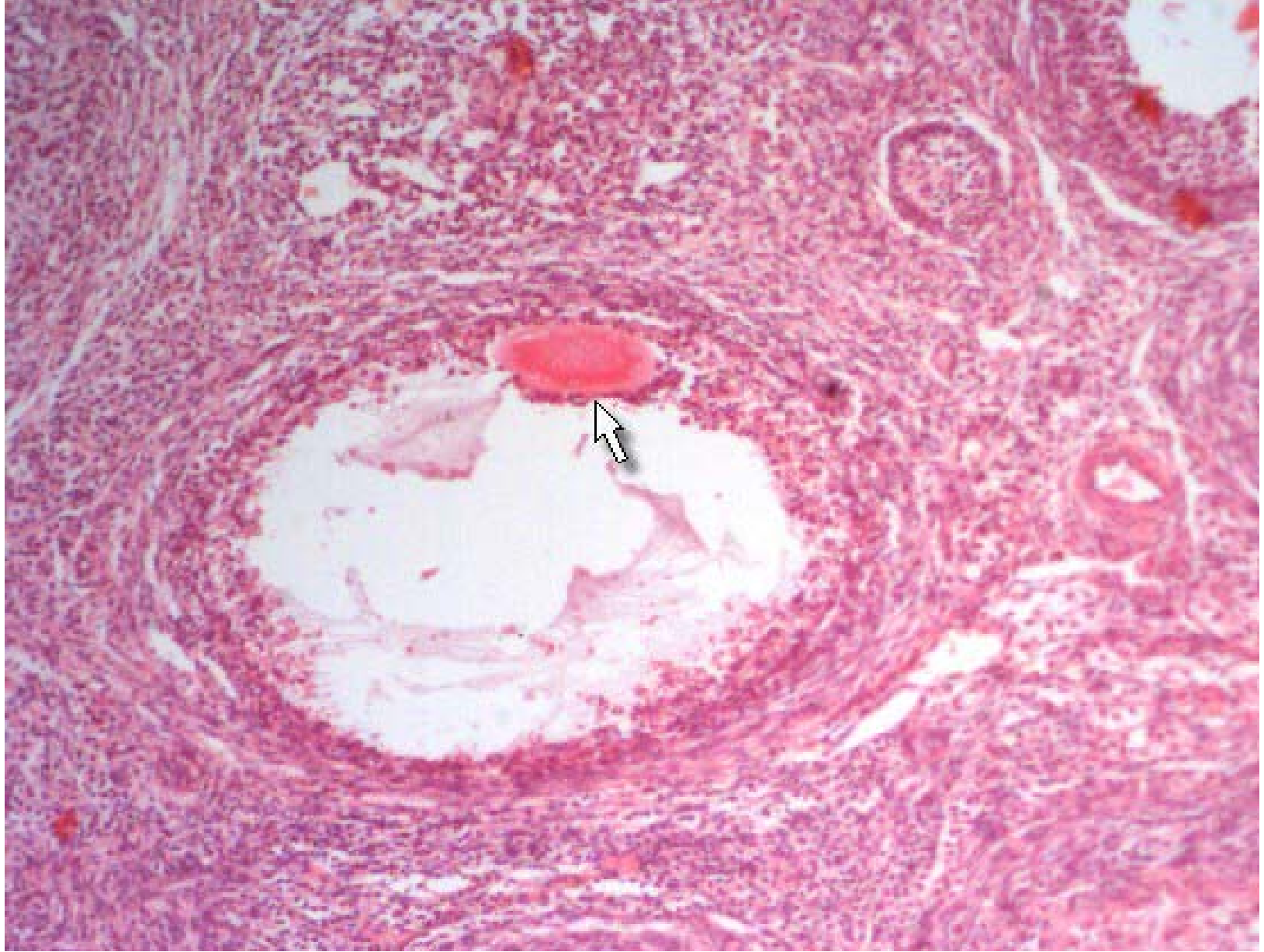
Primary follicle



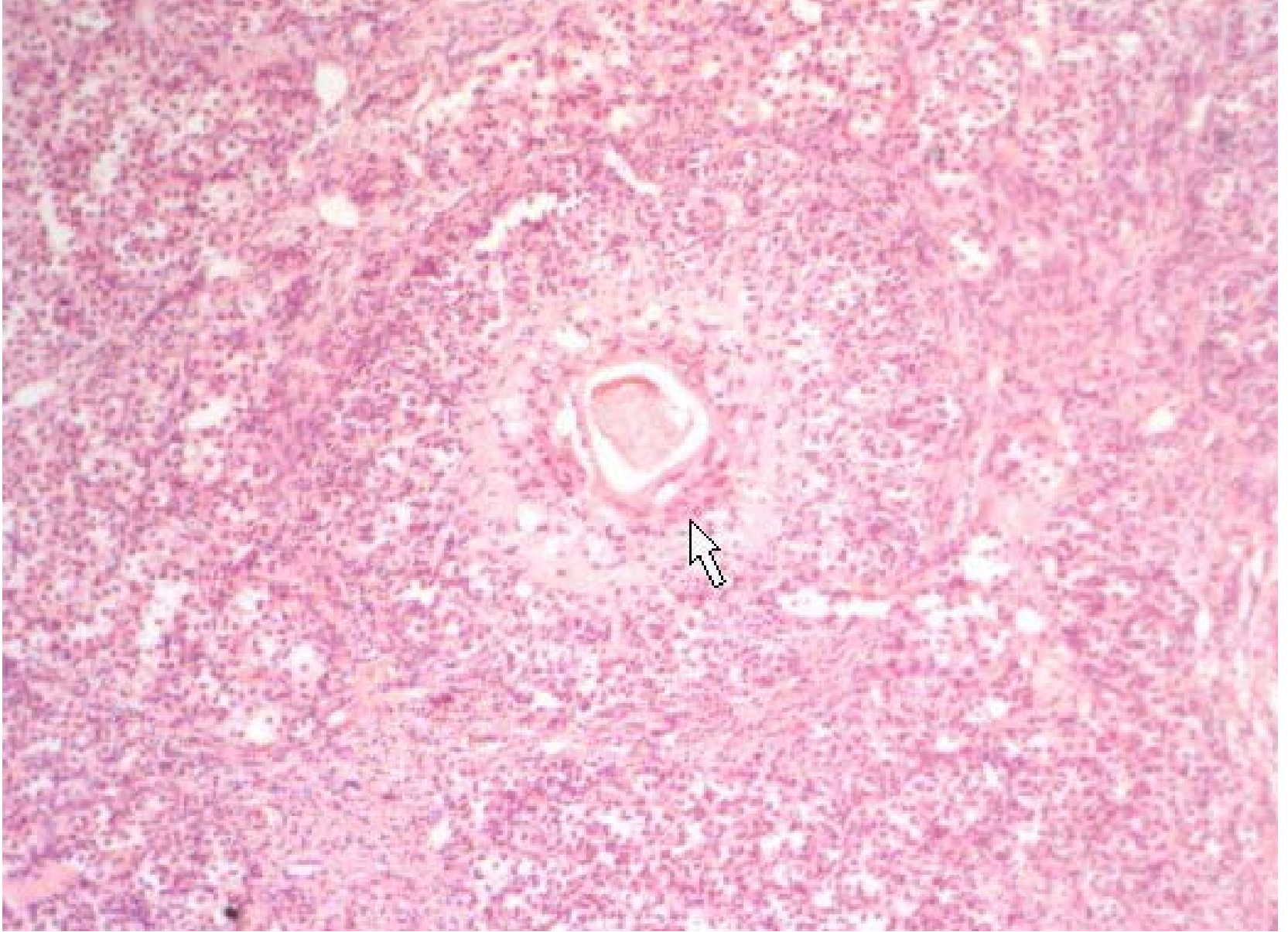
cumulus oophorus



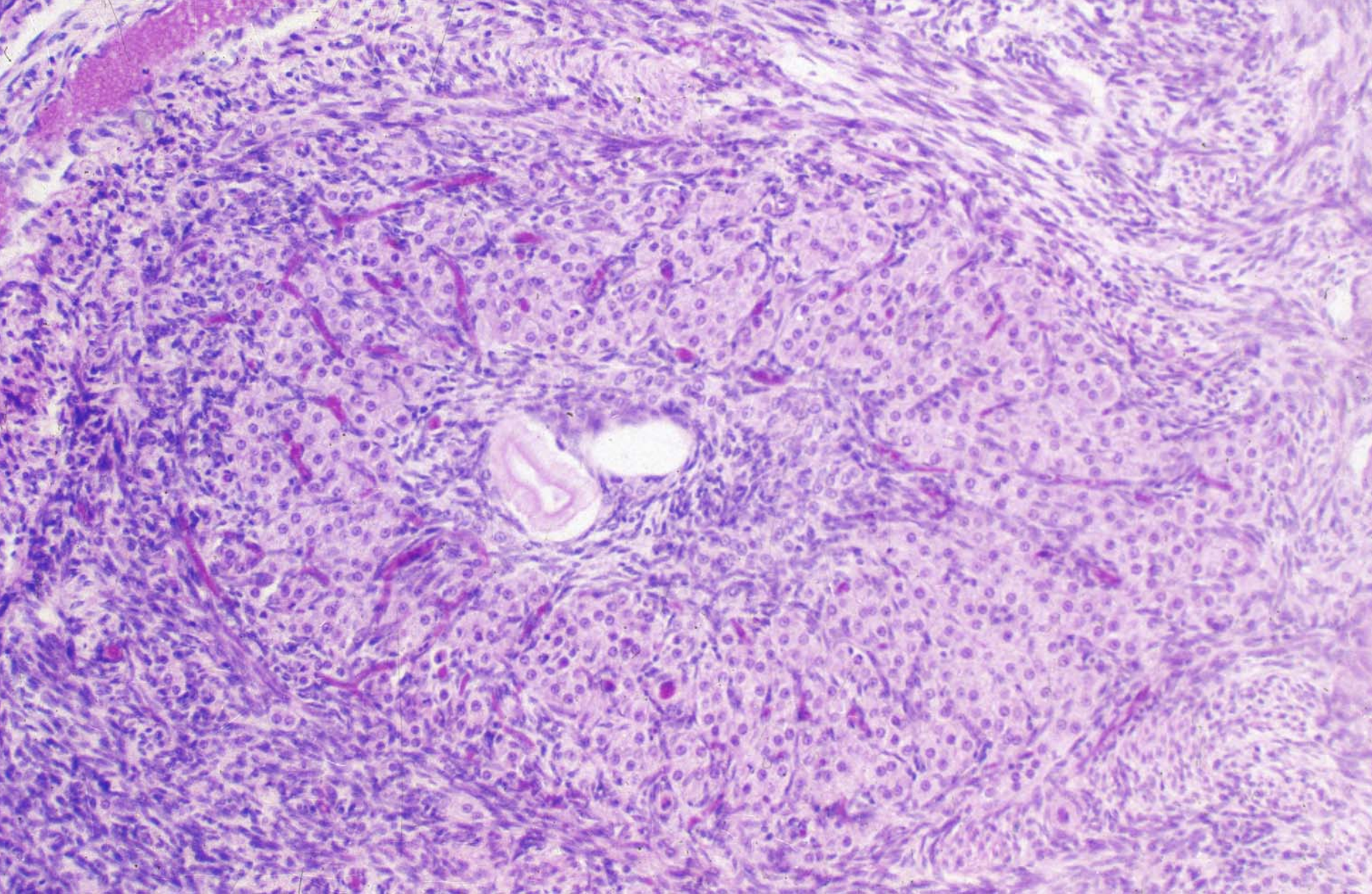
corpus luteum



atretic follicle



interstitial glands



interstitial gland